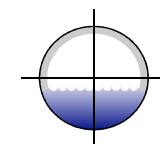
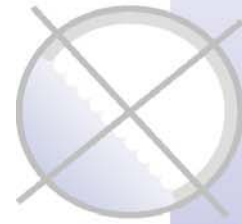


# Steam Liner

**An Inversion Liner with a special steam resistant coating with a significantly reduced tendency for the coating to blister.**

[Click on Picture to View Video](#)

<b>Size Availability</b>	8,9,10,12 (200,225,250,300mm)
<b>Coating stiffness</b>	Medium - Hard
<b>Movement Inversion head</b>	Medium - High
<b>Burst Pressure</b>	Medium-High
<b>Temp Resistance</b>	80 deg C
<b>Method of seam</b>	Flambonded fillet + Welded Tape
<b>Thickness Availability</b>	4mm, 6 mm, 7.5mm
<b>Bends ability</b>	11 deg
<b>Stretch capability</b>	2%
<b>Packaging sizes</b>	To order up to 200m
<b>Possible Techniques</b>	Direct Inversion, Invert and Invert, Invert and Inflate,
<b>Possible Processes</b>	Rapido Main Liner, Eco Pipeliner



**GADMON**  
INDUSTRIES

**Gadmon Industries,**  
57 Glengall Road, London SE 15 6NF,  
United Kingdom,  
Tel: +44 207 277 8878,  
Fax: +44 207 277 9476  
Email: [sales@gadmon.com](mailto:sales@gadmon.com)  
Web: [www.gadmon.com](http://www.gadmon.com)  
Distribution Worldwide from UK, US and  
Germany